

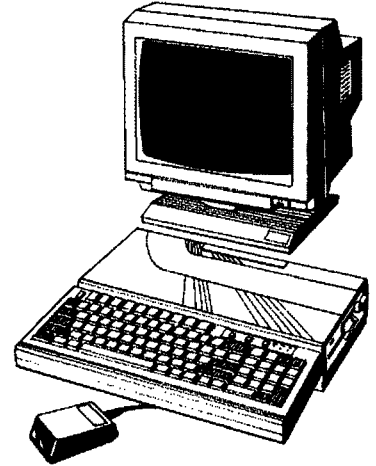
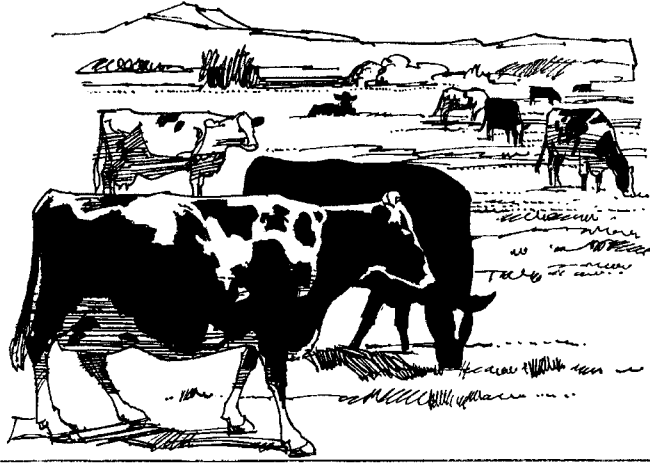


FARM MANAGEMENT REPORT

Lebanon County

2120 Cornwall Road, Suite 1 • Lebanon, PA 17042-9777

(717) 270-4391



COMPARING DAIRY HERD MANAGEMENT SOFTWARE

* * * * *

JOHN D. RUTHERFORD, JR.

Preface

The reader should be aware of some constraints overriding the creation of this report.

- #1. The information given herein is supplied with the understanding that no discrimination is intended and no endorsement by Cooperative Extension is implied.
- #2. Computer software can be divided into two broad categories; those that work in concert with some remote, central processing facility and those that stand alone within a single business. Both types have promoting and contrary aspects: both types have situations where they would or would not be the best choice. This report is not concerned with that discussion, nor should it be construed as implying anything about the relative efficacy of either type of software. This report only discusses stand alone software.
- #3. The intention was not to judge these software. This report will not open itself to libel claims for lost sales . What best suits one farm may not work so well on another.

Comparison of Dairy Herd Management Software

INTRODUCTION

The popularity of personal computers has turned ours into an age of information management. More data can be recorded, stored, retrieved, manipulated, disseminated, and otherwise made use of, more quickly than ever before possible. Managers who find ways to tap the benefits of this information gain an advantage. Helping more managers tap, is a role of extension.

This report contains a discussion of stand-alone dairy herd management software and keys to some of the shorthand used to represent software capabilities. With this list, the reader can quickly compare a large number of software and make better-informed judgments about the software that fits his or her needs. It is hoped that this report will cue the reader to consider more attributes and ask more questions that will further aid in choosing the best software for the situation.

The objective is to bring as many stand-alone software as possible into one report where attributes could be compared in successive columns. Programs whose primary function is the input of farm information to be transmitted to a central or regional processing center where reports are generated and returned to the manager were not considered. This report contains software that a manager will use specifically for his or her operation.

Apologies go to any company or person that is marketing an accounting package that was not included. (Except for companies that were invited to respond and chose not to.) Because the intention is to compare as many as possible, any other software manufacturer, retailer, or other representative is encouraged to contact the Lebanon County Cooperative Extension office (address and phone given later) for a survey and the opportunity to be included in later releases of this report.

UPDATES

Updates will be compiled and published on an as-needed basis throughout the years. Computers and the software they run are changing far too rapidly to think this report will not be outdated within the year. Succeeding reports will be dated and given version numbers (just like software) so the reader knows that information is current.

REPORT

Here are some observations on characteristics that appear to be more prevalent.

- HERDSIZE**-- These programs have the ability to store numerous pieces of information on more cows than are found on the average farm in Pennsylvania. In fact many programs have no limit to the number of animals it can manage. Before discounting a program with greater capacity than current herdsizes, a manager should consider how long this software will be in use and what other capabilities does the software offer. The manager may decide to expand in the future or may enjoy the excess program capacity for holding on to records of cattle long since sold. In addition, there may be highly useful attributes of the software that would be missed if the manager made a purchase decision based on herdsizes.

•ANIMAL INFO-- The aspects about each animal that can be recorded are quite extensive. The reader is advised to prepare a list of desired information (that will be kept by the software) before reading sales brochures. Herd or Group averages, used to see how a cow is performing compared to her mates, are available in better than half of the programs reviewed.

•OTHER INFO-- Economic information, such as cost of production (COP), inventory control, feed costing, and prices (paid and received) is available in only some of the software. It is rare that the software will perform extra functions such as other record keeping, word processing, or a spreadsheet. Most software does little to assist with labor management.

•REPORTS-- Custom sorting of information and a variety of forms of reports are usually part of the software, with graphing somewhat common as well. Most of the software will give reports that are lists of cattle meeting certain criteria. While some software do provide for more advanced forms of reporting, others will expect the user to define the report through customization.

•INTERFACING-- Many of these software can be used in conjunction with other electronic equipment. In some cases software can be linked to a DHI association, to the computer feeding system, the milking system (for automatic loading of information on daily production, milking time, etc.), the internet, and other software, systems, or machines. The information provided here is general. Discuss specific applications with your sales representative.

•YEAR 2000-- All of this software is "Y2K" safe. Other safety consideration include 'employer only' information segregation and about one-half of the packages include passwords as a security measure.

•ASSISTANCE-- Dairy herd management software packages usually offer a number of assistance options. On-screen help and drop-down menus are common to aid the user. Further technical assistance is almost always included in the price of the software, usually for the first full year. The means to this assistance includes nearly every medium, with phone calls, fax, and email most prevalent.

•PALMSIZE-- One reason for this update was to monitor the development of applications for the newly emerging palm-sized (or palm tops) computers. While these computers offer great portability and flexibility of use, this report shows dairy herd management applications for palm sizes are rare.

•PRICES-- Prices range generally from \$100 to 1000. When compared to the time savings and efficiency gains possible, these prices should not be considered excessive. DOS and Windows '98 are the most popular versions of software- though it is accepted that DOS' availability may be limited in the future. Usually there was no difference in prices of format versions of the same software from a company, but some offer more than one software to fit different situations.

- DEMOS**-- There is a near-universal availability of demos, downloadable over the internet or on disk from the company.

- UPDATES**-- For the most part, the programs were updated within the past year. Cost for the updates of programs range from \$20 to \$300. Some of this range may be due to the extent of updating taking place. Other companies offer updates as part of the support agreement. Buyers should ask what is included in service agreements and what limits are placed on there software/assistance if the update is not purchased for a year or two.

- HARDWARE**-- Hardware requirements range from 640 kb to 32 mb of RAM. Hard drive requirements are usually 10 to 20 mb. Printer needs vary greatly and should be discussed with the sales representative. Monitors, on the other hand, seem to be acceptable as long as they are color. Only one program needs to use storage disks to keep information. Modems can add to the usefulness of some software.

The final information offered is the key to the abbreviations and shorthand used in this report.

<u>Sign</u>	<u>Indicates</u>
Blanks and ()	no response given
Ã and •	this alternative is available
alan	as long as needed or necessary
[number]	footnotes- listed at the end
ask	ask a representative to clarify
indef	indefinite
'anyword'	a direct quote from the respondent
vbm	varies by module
mb	mega-bytes
kb	kilo-bytes
gb	giga-bytes

As requested earlier, if you represent or know of software with the potential to be included in this report, please contact John Rutherford at the Lebanon County Cooperative Extension Office, Lebanon, Pennsylvania Ph (717) 270-4391 Fax (717) 272-5314.

Dairy Herd Management Software In This Report

Alpro

Alfa-Laval Agri
11100 N. Congress Avenue
Kansas City, MO 64153
Ph - 816-891-7700
Contact - Greg Eubanks

Barn Owl 2000

PA DHIA
Orchard Road
University Park, PA 16802
Ph — 814-865-1517
Contact — Jim Boyer

Cattle Manager

Vertical Solutions, Inc.
203 11th Avenue SW
Minot, ND 58701
Ph - 800-396-3279
Contact - George Sprengler

Dairy-Champ

Center for Farm Financial Management
University of Minnesota
Dept of Applied Economic
249 Classroom Office Building
1994 Buford Avenue
St. Paul, MN 55108-6040
Ph - 800-234-1111
Contact — Andrew Whyte

Dairy-Comp 305

Scout
Dairy ONE
730 Warren Road
Ithaca, NY 14850
Ph - 800-496-3344, ext. 171
Contact - Dani Thon

Dairy Live

Living Software
539 S. Knowles Road
New Richmond, WI 54017
Ph — 715-246-5808
Contact — Dan Sanderson

Dairyman

Agpro
RR 2, Elmvale
Ontario, Canada L0L 1P0
Ph - 250-652-8557
Contact - Jim Lackey

Dairy Plan IV

Westfalia Dairy Systems
1862 Brummel Drive
Elk Grove Village, IL 60007
Ph — 800-323-6723
Contact — Gary Knode

Dairy SFT

Di-Man Dairy Software
W 2123 Ashburn-Ashford Road
Campbellsport, WI 53010
Ph — 920-533-5156
Contact — Bud Discher

Dairy SUITE

AG Data Resources, LLC
3304 Empire Street
Evans, CO 80620
Ph — 970-330-1870
Contact — John Adams

DairyQuest

Domain, Inc.
201 N. Knowles
New Richmond, WI 54017
Ph — 800-472-6925
Contact — Amy Knuth

DHI-Plus

DHI Computing Service Inc.
1525 West 82nd North
Provo, Utah 84601
Ph — 800-453-9400
Contact — Steven Smith

Farm Stock

Nutrient Solutions In Agriculture
RR 2, Box 495
Palmyra, PA 17078
Ph — 800-270-0047
Contact — Marty Campfield

Herd-Pro

Herd-Pro LLC
430 Deleglise Street
Antigo, WI 54409
Ph — 715-623-1573
Contact — Frederick G. Austin, DVM

PC-Dart

Dairy Records Management Systems
Box 7623, NCSU
Raleigh, NC 27695
Ph — 919-515-1038
Contact — John Clay

Dairy Enterprise

Ag Source Cooperative Services
135 Enterprise Drive
PO Box 930230
Verona, WI 53593-0230
Ph- 800-845-1991

Siga-Dairy

Siga Farm Software
1105 Hains Street
Drummondville, Quebec
J2C 6G6
Ph - 800-567-0915
Contact - Richard Messier

	Alpen Windows	Born Owl 2000	Cattle Manager	Dairy Enterprise	Dairy Live	Dairy Plan	Dairy SFT	Dairy SUME	Dairy-Champ	Dairy-Camp 305	Dairyman	DairyQuest	DUI - Plus	Farm Stock	Herd-Pro	PCOMET	Scoreit	Signa Dairy
total feed costs-calculated		yes	no	yes		yes	no	yes	yes	()	no	yes			yes	yes	()	yes
-recorded		yes	no	yes		yes	no	yes	yes	()	no	yes			()	no	()	yes
-shown as cost per cow		yes	no	yes		yes	no	yes	yes	()	no	yes	yes		yes	yes	()	yes
profit per cow		yes		no		yes		yes				yes	yes	*	yes	yes		yes
bST use		*	*	*	*	*		*	*	*	*	*	*	*	*	*	*	*
health history		*	*	*	*	*	*	*	*	*	*	*	*	*	*	*	*	*
vet file		*	*	*	*	*		*	*	*	*	*	*	*	*	*	*	*
treatments/results		*	*	*	*	*		*	*	*	*	*	*	*	*	*	*	*
treated cow	*	*	*	*	*	*		*	*	*	*	*	*	*	*	*	*	*
vaccinations and dates		*	*	*	*	*		*	*	*	*	*	*	*	*	*	*	*
dewormings		*	*	*	*	*	*	*	*	*	*	*	*	*	*	*	*	*
death/cull date		*	*	*	*	*	*	*	*	*	*	*	*	*	*	*	*	*
death/cull reason		*	*	*	*	*		*	*	*	*	*	*	*	*	*	*	*
feed	*	*		*	*	*		*	*	*		*		*			*	*
feed source		*		*	*	*		*	*	*		*						*
feeding record	*	*		*	*	*		*	*	*		*						*
temperature				*	*	*		*	*	*		*	*					*
previous year		*		*	*	*	*	*	*	*	*	*	*	*	*	*	*	*
custom user-defined info		*		*	*	*		*	*	*	*	*	*	*	*	*	*	*
state averages		*		*				[1]	*	*	*	*	*	*	*	*	*	*
other benchmarks		*		*[1]				*	*	*	*ask	*	*	*	*	*	*	*
Herd and Group averages																		
daily and annual production	daily	yes		yes	yes	yes		yes	yes	d or m	yes	yes	yes	yes	yes	yes	monthly	yes
annual pounds shipped		yes		yes	yes	yes		yes	yes		yes	yes	yes	yes	yes	yes		yes
age		yes		yes	yes	yes		yes	yes	yes	yes	yes	yes	yes		yes	yes	yes
days in milk	yes	yes		yes	yes	yes		yes	yes	yes	yes	yes	yes	yes	yes	yes	yes	yes
age at first calving		yes		yes		yes		yes	yes	yes	yes	yes	yes		yes	yes		yes
breedings per cow		yes		yes	yes	yes		yes	yes	yes	yes	yes	yes	yes	yes	yes	yes	yes
days open	yes	yes		yes	yes	yes	yes	yes	yes	yes	yes	yes	yes		yes	yes	yes	yes
% of group pregnant by X days		yes		yes		yes		yes	yes	yes	yes	yes	yes			yes		yes
dry matter intake		yes		yes				yes	yes									yes
ration		yes		yes				yes	yes			yes						yes
days dry		yes		yes	yes	yes		yes	yes	yes	yes	yes	yes			yes		yes
calf mortality		yes		yes	yes	yes		yes	yes	yes	yes	yes	yes	yes	yes	yes		yes
heifers/bulls born	yes	yes		yes	yes	yes	yes	yes	yes	yes	yes	yes	yes	yes	yes	yes		yes
production by stage of lactation		yes		yes		yes		yes	yes	yes	yes	yes	yes			yes		yes
Former herdmates' files for ref.? for how long?		yes		yes	yes	yes	yes	yes	yes	yes	yes	yes	yes	yes	yes	yes	yes	yes
		indef		indef	indef	()	indef	indef	'forever'	alan	disk full		alan	alan	indef	indef	alan	no limit

	Alpen Windows	Born Owl 2000	Cattle Manager	Dairy Enterprise	Dairy Live	Dairy Plan	Dairy SFT	Dairy SUME	Dairy-Champ	Dairy-Camp 305	Dairyman	DairyQuest	DUI - Plus	Farm Stock	Herd-Pro	PCOMET	Scout	Signa Dairy
Reports																		
Pre-programmed sorting	yes	yes	yes	yes	yes	yes	no	yes	yes		yes	yes	yes	yes	yes	yes	yes	yes
Custom sorting accomplished	easily	easily	yes	yes	easily	easily	not avail	easily	easily	yes	yes	some diff	easily	yes	yes	yes	yes	[1]
What form of reporting is used?																		
-lists																		
-graphs																		
-charts																		
-tables																		
Customized reports	yes	yes	no	yes	yes	yes	no	yes	yes	yes	yes	yes	yes	yes	yes	yes	yes	no
Reports viewed on screen	yes	yes	yes	yes	yes	yes	no	yes	yes	yes	yes	yes	yes	yes	yes	yes	yes	yes
Sorts records on any field	yes	yes	no	no	yes	yes	no	yes	yes	yes	yes	yes	yes	yes	yes	yes	yes	no
Maximum criteria for a sort	all fields	no limit	1	[2]	no limit	no none	()	no limit	1	[1]	15	4	60	no limit	1	2	2 or 3	()
Create custom graphs	no	yes	no	no	yes [1]	yes	no	yes	yes	yes	yes	no	yes	no	no	yes	no	yes
Graph any items or comparisons	no	yes	no	yes	no	yes	()	yes	yes	yes	yes	yes	yes	no	yes[2]	yes	no	()
automatically?		yes	no	yes		()		yes	no	yes	()	yes	yes		yes[2]	yes	yes	
custom programmed?		yes	no	yes		yes		yes	yes	yes	()	no	yes			yes	no	
Automatic reports of cows...		yes																
off milk										[2]								
off feed																		
repeat breeders																		
high SCC																		
high temperature																		
low temperature																		
wrong group																		
outliers on any group or list																		
other	[1]	[1]		[3]	[2]	[2]		[2]										
Any averages compared by lactation	no	yes	no	yes	yes	yes	()	yes	yes	yes	yes	yes	yes	no	yes	yes	()	yes
Calculates cost of production	no	yes	no	yes	no	yes	no	yes	no	no	no	yes	no	yes[1]	no	no	no	yes
Income over feed cost																		
by herd		yes	no	no	no	yes	no	yes	yes	no	no	yes	yes	yes	yes	yes	no	yes
by group		yes	no	no	no	yes	no	yes	yes	no	no	yes	yes	yes	yes	yes	no	yes
by cow	yes	yes	no	no	no	yes	no	yes	no	no	no	yes	yes	yes	yes	yes	no	yes

	Alpro Windows	Born Owl 2000	Cattle Manager	Dairy Enterprise	Dairy Live	Dairy Plan	Dairy SFT	Dairy SUITE	Dairy-Champ	Dairy-Camp 305	Dairyman	DairyQuest	DUI - Plus	Farm Stock	Herd-Pro	PCOMIT	Scout	Signa Dairy
--	---------------	---------------	----------------	------------------	------------	------------	-----------	-------------	-------------	----------------	----------	------------	------------	------------	----------	--------	-------	-------------

Special

Inventory management capabilities

[3]

- feed inventory
- feed vlaue
- estimate needs to X date
- days of feed remain for X animals
- shrink calculated
- daily fed out

Will it track daily production?

by cow		yes		yes	yes	yes	no	yes		yes[3]	yes	yes	yes	yes	no	yes		yes	
milker(s)	yes	yes		yes	yes	yes		yes	yes	[3]	yes	no		yes		yes		yes	
group	yes	yes		yes	yes	yes		yes	yes	yes[3]	yes	yes		yes		yes		yes	
Does it track milk prices?	no	yes	no	yes	yes	no	yes	yes	yes	yes	no	yes	no	no	no	yes		yes	no
-quality bonuses?	no	yes	no	yes	no	no	no	yes	yes	yes	no	yes	no		no			yes	no
-feed costs?	no	yes	no	yes	no	no	no	yes	yes		no	yes	no		yes	yes			yes
-market prices for other sales?	no	yes	no	yes	no	no	no	no	no		no	yes[1]	no		no				no

Tracks milking information?

milking time				[4]						[3]									[1]
clean-up time				[4]						[3]									
pounds per worker				[4]						[3]									
pounds per hour				[4]						[3]									
cows per hour				[4]						[3]									
Labor cost-																			
total				[4]															
per cow				[4]															
hours per cow				[4]															
per group (esp. calves)				[4]															
per activity				[4]															

Tracks labor problems

()

()

per worker

per shift

Auto carry-forward of pedigree	yes	yes	yes	yes	yes	yes	yes	yes	yes	yes	yes	yes	yes	yes	yes	yes	yes	yes	yes
Decision making assistance		yes	no	yes	no	no	()	yes	yes	yes	yes	yes	()	no	no	no	no[1]	no	no

	Alpro Windows	Bom Owl 2000	Cattle Manager	Dairy Enterprise	Dairy Live	Dairy Plan	Dairy SFT	Dairy SUME	Dairy-Champ	Dairy-Camp 305	Dairyman	DairyQuest	DHI - Plus	Farm Stock	Herd-Pro	PCDNET	Scout	Signa Dairy
System interfaces with other machines						[3]				[4]					[3]			
systems										[4]					[3]			
the internet																		
other software packages					[4]										[3]			
Other Capabilities																		
word processing																		
spreadsheet																		
label making																		
balance rations																		
keep any financial records																		
crop records																		
other																		
Software part of a larger package?	no	no	no	yes	no	no	no	no	no	no	no	no	no	yes	no	no	no	no
if so, what is available?				[5]										[2]				
they work together seamlessly?				yes										yes				
Operate or control any part of farm	no	no	()	yes[6]	no	yes[4]	()	yes[3]	no	no	no	no	no	no	no	no	no	yes[2]
Work on palmTop?				yes				yes[4]				yes	yes[1]	yes[3]				
Is there a palmtop application?				yes				yes						yes[4]				
Download data from palmtop?				yes				yes	[1]	yes		yes		yes				
Upload data to palmtop?				yes				yes				yes		yes				
Data Entry																		
Information entered a single time	most	all	all	all	all	most	()	all	all	all	all	all	all	all	all	all	all	all
Information entered automatically	[2]	[2]	()	[7]	from DHI files	[5]	milk wts.	[5]		[5]	[1]	[2]	[2]	()	prod. from DHI	no	()	prod. from DHI
Records easily audited and verified	yes	yes	yes	yes	yes	yes	yes	yes	yes	yes	yes	yes	yes	yes	yes	yes	yes	yes
Errors easily corrected	yes	yes	yes	yes	yes	yes	()	yes	yes	yes	yes	yes	'most'	yes	yes	yes	yes	yes
Information updated daily?	yes	yes	yes	yes	yes	yes	yes	yes	yes	yes	yes	yes	yes	yes	yes	yes	yes	yes
Go directly to offspring record from dam's?	no	no	no	no	yes	yes	no	no	yes	yes	yes	no	yes	yes	no	no	yes	yes

	Aljaro Windows	Born Owl 2000	Circle Manager	Dairy Enterprise	Dairy Live	Dairy Plan	Dairy SFT	Dairy SUITE	Dairy-Champ	Dairy-Camp 305	Dairyman	DairyQuest	DUI - Plus	Farm Stock	Head-Pro	PCNET	Scout	Signa Dairy
Single or Base w/Modules	single	single	single	B w/M	single	B w/M	single	B w/M	single	single		B w/M	B w/M	B w/M	single	single	single	B w/M
Modules available						[9]		[9]				[5]	[5]	[2]				[4]
Besides english, in what languages is this software available?	19 languages [3]			4 languages [10]		17 languages [10]		2 languages [10]	2 languages [6]	spanish		spanish	spanish	2 languages [5]				french
Demo available	yes	yes	yes	yes	yes	yes	yes	yes	yes	no	yes	yes	yes	yes	yes	yes	yes	yes
through the internet?	no	no	yes	yes	yes	()	yes	yes	yes		yes	no	yes	yes	yes	yes	no	yes
cost	()	0[4]	0	0	0		25)/\$5 [11]	0		0	no	[6]	0	0	0	0	0
Date of most recent version	Aug-99	May-99		Mar-99	Jul-99	Jul-99	Jun-99	Jul-99	Mar-99	Oct-98		Jan-99	Jun-99	Spr 99	May-99		Oct-98	Apr-99
Next version/release planned date		Fall 99		Jul-99	Sep-99	2000	constant	Jan-00	Oct-99	Oct-99		Nov-99	Jun-99	Sep-99	Oct-99		Oct-99	Dec-99
Updates cost	()	?	20-99	199-299	0[6]	()	[1]	0	free [7]	varies	<100	50-100	w/supt	50+shp	[5]	0	w/rent	0[5]
Minimum Requirements																		
Minimum RAM	16 mb	32 mb	8 mb	8 mb	16 mb	64mb	16 mb	32 mb	8 mb	1 mb	1 mb	640 kb	[7]	8 mb	8 mb	32 mb	1 mb	[6]
Hard drive space	10 mb[4]	25mb[5]	10 mb	640 k	25 mb	6 gb	6 mb	100 mb	20 mb	10 mb	15 mb	20 mb	[8]	10 mb	5 mb	40 mb	10 mb	[6]
Printer	any	Win 95-98	yes	any	Win Comp	()	Win comp	Win comp	basic	DOS comp	DotMtrx	DOS comp	[9]	Win Comp	yes	yes	Dos Comp	[6]
Monitor	no spec.	[6]	VGA	color-suc	VGA or +	()	15"	VGA or +	color	color prf	VGA	color	[10]	VGA or +	color	yes	color prf	[6]
Additional data storage necessary?	no	no	yes		no	no	no	no	no					no	no	no		
what can be used	floppy disks	[7]	high-density disks			tapes/zip drives		zip drive tape, CD						zip drive cd cassette	zip drive for backup	zip	()	
Other peripherals	no	[8]	no		[7]	no			no	modem			modem, internet	()		no	modem	mouse
Other comments										for DHI					[6]		for DHI	

FOOTNOTES to the Dairy Herd Management Software comparison:

These are notes given by the respondents. Where the author was not sure what was meant or a direct statement is used, the comment is listed in quotations for the reader to decipher, or ask the representative. The author acknowledges that many of these comments results from a desire on the part of the respondent to give as much information as possible while not fully understanding some questions.

Alpro Windows

- [1] There are 60 pre-programmed reports.
- [2] 'milk weights, feed data, activity'
- [3] Czechoslovakian, Croatian, Danish, German, Spanish, French, Italian, Japanese, Korean, Magyar, Netherlandar, Norwegian, Polish, Portuguese, Russian, Slovene, Sumoi, Swedish, Turkish
- [4] '10 Mb for program plus 2 Mb for every 100 cows'

Barn Owl 2000

- [1] 'ME, MCD, Laboratory Analysis, Histograms'
- [2] 'Any information provided in DII format by automated systems. Systems with terminal black boxes (eg. Boumatic) can also provide automatic data entry.'
- [3] 'Support is free via e-mail or to users on test with PA DHIA. Others at \$45/hr with 1/2 hour minimum charge.'
- [4] CD must be returned in 15 days.
- [5] '25 Mb + approx. 1 Mb/ 100 animals with full test history.'
- [6] '17 " recommended. Best viewed at 800 x 600 or better.'
- [7] 'diskette, CD-R, CD-RW, zip or any supported by Win.'
- [8] 'Recommended 56K modem, cable modem, or other ISP service.'

Dairy Live

- [1] 'Production data only.'
- [2] Dairy Live offers automatic reports other than those listed on the survey.
- [3] 'semen inventory'
- [4] can interface with processing center for DHI
- [5] Dairy Live also offers a smaller herd version (100<), called Homestead. It has the same features as Dairy Live, except it will not interface with DHI. Cost is \$325.
- [6] 'Free for 6 months, the included with paid tech support.'
- [7] 'Scanner or digital camera for storing pictures of animals.'

Dairy Plan

- [1] 'Alternate ID'
- [2] 'missed milking and not identified'
- [3] 'We charge fees to interface with other software. This is rare.'
- [4] 'Westfalia feed stations, milk meters, pulsators.'
- [5] 'DHIA info or info from another {dairy management} program.'
- [6] 'This has not been determined. Currently there is no charge.'
- [7] Prices are not published. Dealerships determine prices, which may vary from suggested retail.
- [8] The version of Dairy Plan to work with Windows NT has not yet been released.
- [9] Milk meters, Feed stalls, Special sorter, Remote site interface
- [10] German, French, Netherlander, Italian, Spanish, Hebrew, Portuguese, Polish, Swedish, Czechoslovakian, Slovene, Finnish, Danish, Norwegian

Dairy SFT

- [1] 'First year free, included in service plan, \$125 otherwise.'

Dairy SUITE

- [1] 'Available through comparison reports on web site.'
- [2] 'any custom report can be automatically generated by MWFAI'
- [3] 'milking systems, feeding systems, etc.'
- [4] 'some portions run on palmtop'
- [5] 'feed consumptions, milk production, component data, updated PTA values, updated cow indexes, etc.'
- [6] 'subject to ISP pricing schedule'
- [7] 'subject to ISP'
- [8] 'Automated off-site back-up, data validation, data base repair, audit logs, etc.'
- [9] 'DairySTOR, FeedSTOR, FlowSTOR, MWFAI, PIM, QuikReports'
- [10] Spanish, Italian
- [11] 'Free download/ \$5.00 CD'

Dairy-Champ

- [1] 'We can export text files in many formats.'
- [2] Can be purchased with or without a one-year service contract.
- [3] DOS version costs \$445 with service contract, or \$45 without.
- [4] 'The graphing portion of the program is Windows-based.'
- [5] '895 for single farm, \$1295 for multiple farm'
- [6] Russian and Spanish (Sp. available Oct. '99)
- [7] 'Free to maintenance contract holders.'

Dairy-Comp 305

- [1] 'more than you would want or need'
- [2] 'anything as long as the user can identify how the animal would qualify to be on the list.'
- [3] 'Depends on the information available in the milking system software.'
- [4] 'It can interface with all major parlor software for transfer of information.'
- [5] 'Any information electronically accumulated can be loaded in.'
- [6] 'Carbon Copy Support- We LOGON to the user's PC and run their software.'

Dairy Enterprise

- [1] 'metric milk planning for Quota system. SPP and QSUM, Herd and Profit Prospect, "Standard Peak Production".'
- [2] 'Depends on length of characters within description item.'
- [3] There are 13 more standard reports given by Dairy Enterprise. Ask your sales representative.
- [4] 'If interfaced with process computer of milking equipment.'
- [5] Dairy Enterprise I and II, both with and without DHIA and Computer interfaces.
- [6] computer feeder
- [7] 'identical details in a row; Data from milk/feed process system; Result milk recording; Attention list for deviation in production; If using hand held terminal- milk weights and in-heat, inseminated, pregnant, dry-off and fresh; special details per group of animals'
- [8] \$495 to 1495, (without Annual Support Plan) depending on program and interface chosen.
- [9] Current versions are in DOS but work on these platforms. Windows versions were due out last fall.
- [10] French, Dutch, German, and Spanish

Dairyman

- [1] 'Historical, DHI data, Breed data'
- [2] 'Uses checkpoint restart technique.'

DairyQuest

- [1] 'heifers, bulls, and bST'
- [2] 'moves, dryoffs, bST, treatments, vet checks, vacc., removals, move to bull, comments'
- [3] 'the first 6 months are included in the price, then there are 3 programs to handle your needs'
- [4] with the aid of a communications program, Dairy Quest technical support can 'jump' a customer's system.
- [5] 'DHI, Sire mapping, Parlor, Palm, Graphics'

DHI-Plus

- [1] 'Same application.'
- [2] 'new calves, string changes, dry and fresh cows'
- [3] \$300- 500 + \$25/month
- [4] \$625- 1400 + \$25/month
- [5] 'milk equipment interface'
- [6] demo cost based on herd size
- [7] DOS 640 kb, Windows 16 Mb
- [8] DOS 10 Mb, Windows 40 Mb to install
- [9] blank for DOS, Windows compatible printer for Windows versions
- [10] blank for DOS, 800 x 600 for Windows

Farm Stock

- [1] calculates COP per cow, not by production
- [2] Farm Trac, Farm Fund\$, Farm Site
- [3] a palm top version for Farm Stock will be available in September '99
- [4] Trac Mate and Site Mate
- [5] Spanish and Portuguese

Herd-Pro

- [1] large farm edition maximum is 8000, standard edition is 800
- [2] 'Graphs lactation curves automatically. No other graphs.'
- [3] 'Machines- Alfa Laval and Surge. Milk Meters- Boumatic, Surge, Alfa Laval, and Afimilk.
DHI Associations- Raleigh, Provo, MidState, Wisconsin, Minnesota, and Canada.'
- [4] The current version 5.0 prices are Standard Edition- 589, Large Farm Edition- 889,
Professional Edition- 889, and Lite Edition- 389. A new version is coming in
October '99 which will cost 989.
- [5] 'Full credit for previous purchases applied to the update price.'
- [6] New version 6.0 coming in October '99.

PCDART

- [1] milking time kept 'only on test day'
- [2] 'Version 6 works on the DOS to NT platforms, Version 7 works on Windows 95
through NT.'
- [3] Cost is \$5+ \$0.10/cow/month up to a max of \$20 per month.

Scout

[1] This status is currently being evaluated.

Siga Dairy

[1] sorting done by exporting data to a spreadsheet application

[2] computer feeder

[3] 'Between \$100C and \$175C a year depending on modules.'

[4] 'Herd Management or Ration (\$250C) can be purchased together or separately. There is also a

Client module (\$225C) that cannot work alone.'

[5] '\$) if pay the annual fee' {see [3]}

[6] 'Anything that runs Windows '95, '98, or NT.'